

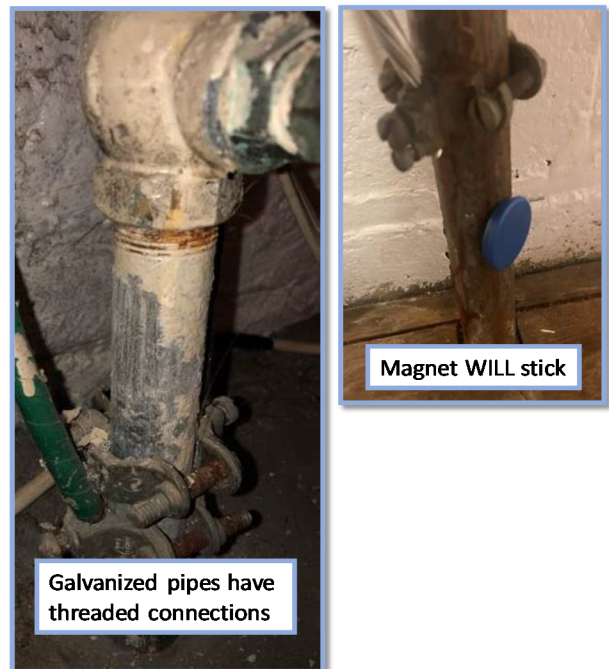
Water Service Pipe Material Identification Guidance

	Lead	Galvanized Iron	Copper	Brass
Outer Appearance	Dull Gray, Bendable; Often curves between wall/floor and valve	Dark Gray or black; Straight rigid pipe	Brown; Can have green corrosion spots	Brown; Can have green corrosion spots
Threads at connections	None	Yes	None	Yes
Scratch Test (coin or key)	Shiny Silver	Hard to scratch, remains gray	Copper, like a penny	Gold Color
Magnet Test	Does not Stick	Magnet WILL Stick	Does not stick	Does not stick

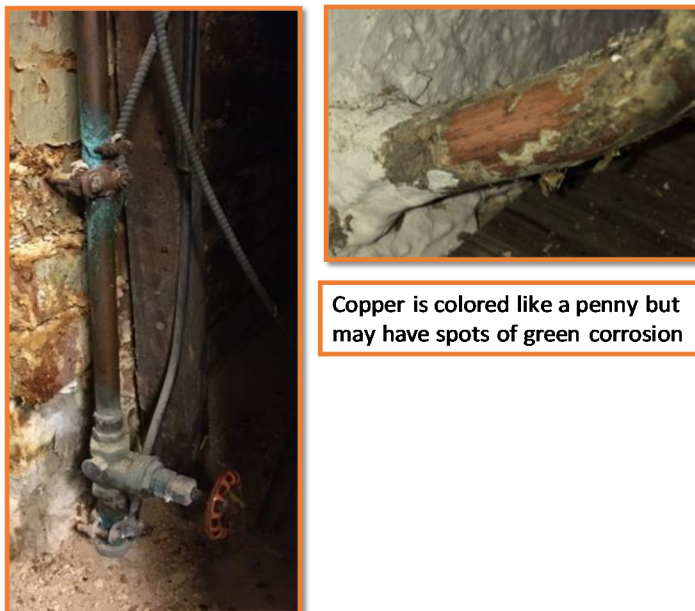
Lead



Galvanized Iron



Copper



Brass



Instructions to Provide Water Service Material Information

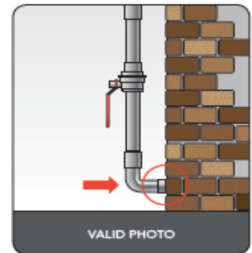
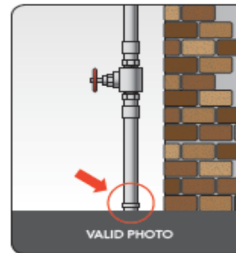
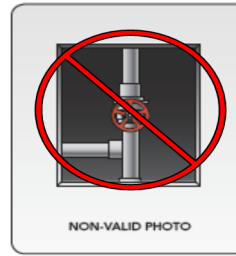
Step #1

Locate the water service line entering the building.

You need to see the pipe where it comes through the floor or wall. This is typically located in the basement or lowest floor of the building.



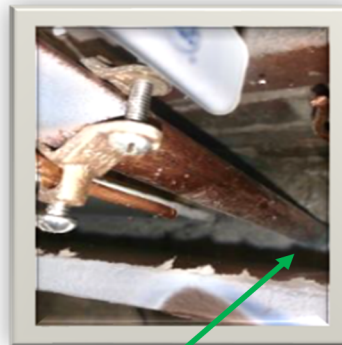
Cannot see where pipe comes through the wall or floor. Try to pull back insulation and use a phone camera to view pipe at breakthrough.



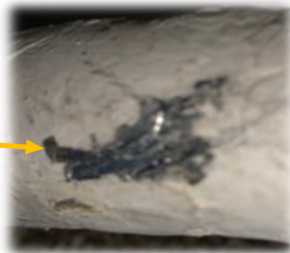
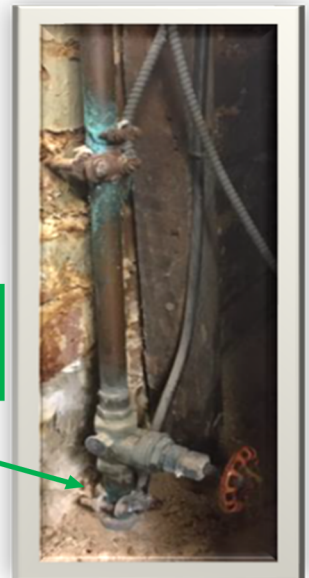
Step #2

Use the Water Service Identification Guide to Determine Water Pipe Material

- Look for Threaded Connections
- Scratch pipe with coin or key to reveal the metal. You may need to scratch through paint or corrosion. Lead is soft and scratches easily.
- Try to stick a magnet to the pipe. Any ordinary kitchen magnet will work. A magnet will not stick to a lead pipe.



Valid photos: Can see where pipe breaks through the floor or wall



Step #3

Take three (3) Photos

1. Pipe Coming Through Floor or Wall
2. Closer View of Pipe with Scratch
3. Further View of Pipe that Includes Shut-Off Valve



Step #4

Send photos to Virginia Public Utilities at ****@vpuc.com

Don't forget to provide a service address and pipe material with your emailed photos.

If you know the size of your service line, please include too. (not required)